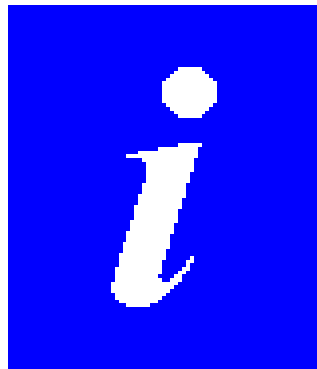


# the ACT NoW study

information for you and your  
family



we would like **you** to  
**take part** in a study

study

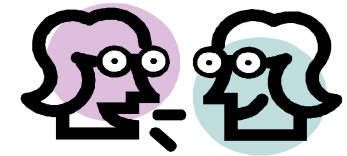


the study will try to find the best way to **help** people with their **communication** after a **stroke**



in this study you would see

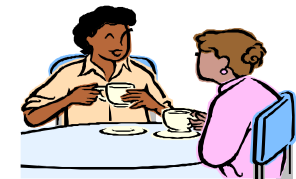
a speech and language  
therapist



speech and  
language  
therapist

or

an ACT NoW visitor



visitor

a speech and language **therapist**  
will try to help your  
communication

**or**

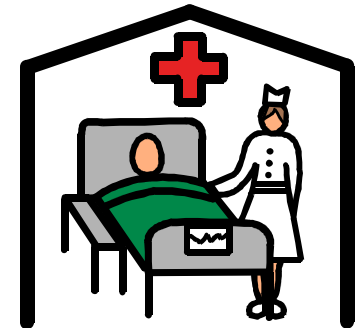
**A visitor** will give you time and  
company

the speech and language therapist

or

the visitor

will come to you at home or in hospital

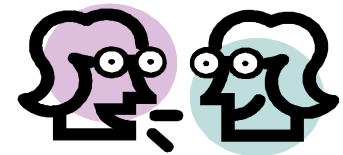


we do not know which is  
better for you

a speech and language  
therapist

or

a visitor



speech and  
language  
therapist



visitor

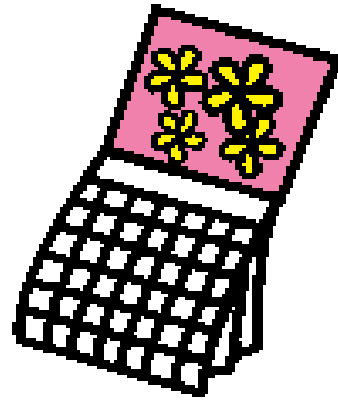
who you see is decided by  
**chance**





the study will take about **6**  
**months**

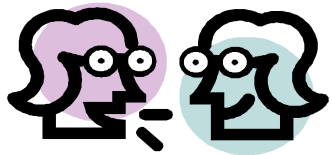
6 months



now

4 months

6 months

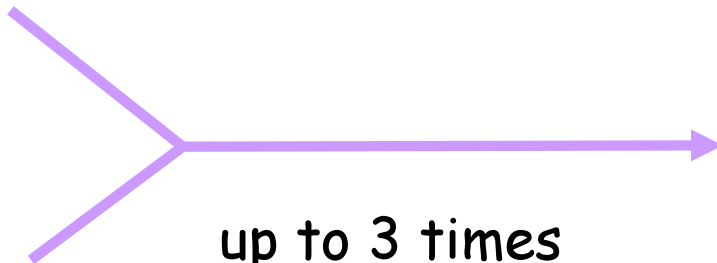


speech and language therapist

or



visitor



up to 3 times a week



break from support

interviewer



you can **stop** at any time



we will **video** you when you  
finish the study



to see how your **communication** is  
at that time

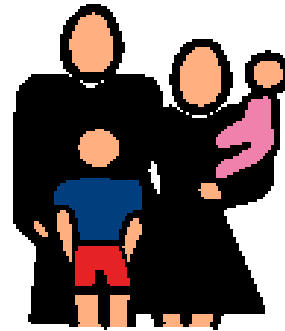
we will also ask **you** and your  
**family** some **questions**

you



and

family



everything is **private**



but we will tell your **doctor** you  
are in the study

it is your **choice**

you **do not** have to take part

you choose

**yes** 

or

**no** 

you will get the **usual**  
**NHS care** if you do not  
take part





if you want to **take part**

we will ask **you** or **your family**  
to **sign** a form



do you have any **questions?**

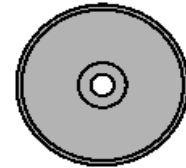


**this information is also  
available as**

**a video**



**or DVD**



**an audio tape**

