



# Diagnostic accuracy of the T-MACS decision aid with a contemporary point-of-care troponin assay

DOI:

[10.1136/heartjnl-2018-313825](https://doi.org/10.1136/heartjnl-2018-313825)

## Document Version

Accepted author manuscript

[Link to publication record in Manchester Research Explorer](#)

## Citation for published version (APA):

Body, R., Almashali, M., Morris, N., Moss, P., Jarman, H., Appelboam, A., Parris, R., Chan, L., Walker, A., Harrison, M., Wootten, A., & McDowell, G. (2019). Diagnostic accuracy of the T-MACS decision aid with a contemporary point-of-care troponin assay. *Heart*, 105(10), 768-774. <https://doi.org/10.1136/heartjnl-2018-313825>

## Published in:

Heart

## Citing this paper

Please note that where the full-text provided on Manchester Research Explorer is the Author Accepted Manuscript or Proof version this may differ from the final Published version. If citing, it is advised that you check and use the publisher's definitive version.

## General rights

Copyright and moral rights for the publications made accessible in the Research Explorer are retained by the authors and/or other copyright owners and it is a condition of accessing publications that users recognise and abide by the legal requirements associated with these rights.

## Takedown policy

If you believe that this document breaches copyright please refer to the University of Manchester's Takedown Procedures [<http://man.ac.uk/04Y6Bo>] or contact [uml.scholarlycommunications@manchester.ac.uk](mailto:uml.scholarlycommunications@manchester.ac.uk) providing relevant details, so we can investigate your claim.



# Heart

## Diagnostic accuracy of the T-MACS decision aid with a contemporary point of care troponin assay

Journal:	<i>Heart</i>
Manuscript ID	heartjnl-2018-313825.R2
Article Type:	Original research article
Date Submitted by the Author:	10-Oct-2018
Complete List of Authors:	<p>Body, Richard; Central Manchester University Hospitals NHS Foundation Trust, Emergency Department; The University of Manchester, Cardiovascular Sciences Research Group</p> <p>Almashali, Malak; Manchester Metropolitan University, School of Healthcare Science</p> <p>Morris, Niall; The University of Manchester, Cardiovascular Sciences Research Group; Manchester University NHS Foundation Trust, Emergency Department</p> <p>Moss, Phil; St George's NHS Foundation Trust, Emergency Department</p> <p>Jarman, Heather; St George's NHS Foundation Trust, Emergency Department</p> <p>Appelboam, Andrew; Royal Devon &amp; Exeter Hospital NHS Foundation Trust, Emergency Department</p> <p>Parris, Richard; Bolton NHS Foundation Trust, Emergency Department</p> <p>Chan, Louise; Hampshire Hospitals NHS Foundation Trust, Emergency Department</p> <p>Walker, Alison; Harrogate and District NHS Foundation Trust, Emergency Department</p> <p>Harrison, Mark; Northumbria Healthcare NHS Foundation Trust, Emergency Department</p> <p>Wootten, Andrea; Wirral University Teaching Hospital NHS Foundation Trust, Emergency Department</p> <p>McDowell, Garry; Manchester Metropolitan University, School of Healthcare Science; The University of Manchester, Cardiovascular Sciences Research Group</p>
Keywords:	Acute coronary syndromes < Coronary artery disease < DISEASES
Abstract:	<p><b>Objectives</b></p> <p>The rapid turnaround time of point of care (POC) cardiac troponin (cTn) assays is highly attractive for crowded Emergency Departments (EDs). We evaluated the diagnostic accuracy of the Troponin-only Manchester Acute Coronary Syndromes (T-MACS) decision aid with a POC cTn assay.</p> <p><b>Methods</b></p> <p>In a prospective diagnostic accuracy study at 8 EDs, we included patients</p>

with suspected acute coronary syndromes (ACS). Blood drawn on arrival and 3 hours later was analysed for POC cTnI (i-Stat, Abbott Point of Care). The primary outcome was a diagnosis of ACS, which included both an adjudicated diagnosis of acute myocardial infarction (AMI) based on serial laboratory cTn testing and major adverse cardiac events (death, AMI or coronary revascularisation) within 30 days.

#### Results

Of 716 patients included, 105 (14.7%) had ACS. Using serial POC cTnI concentrations over 3 hours could have 'ruled out' ACS in 198 (31.2%) patients with a sensitivity of 99.0% (95% CI 94.4 – 100.0%) and negative predictive value 99.5% (95% CI 96.5 – 99.9%). No AMIs were missed. T-MACS 'ruled in' ACS for 65 (10.4%) patients with a positive predictive value of 91.2% (95% CI 82.1 – 95.9%) and specificity 98.9% (97.6 – 99.6%).

#### Conclusion

With a POC cTnI assay, T-MACS could 'rule out' ACS for approximately one third of patients within 3 hours while 'ruling in' ACS for another 10%. The rapid turnaround time and portability of the POC assay make this an attractive pathway for use in crowded EDs or urgent care centres. Future work should also evaluate use in the pre-hospital environment.

SCHOLARONE™  
Manuscripts

Peer Review Only

# Diagnostic accuracy of the T-MACS decision aid with a contemporary point of care troponin assay

## **SHORT TITLE:**

T-MACS with point of care troponin

## **AUTHORS:**

Richard Body;<sup>a, b, c</sup> Malak Almashali;<sup>c</sup> Niall Morris;<sup>a, b</sup> Phil Moss;<sup>d</sup> Heather Jarman;<sup>d</sup> Andrew Appelboom<sup>e</sup>; Richard Parris;<sup>f</sup> Louisa Chan;<sup>g</sup> Alison Walker;<sup>h</sup> Mark Harrison;<sup>i</sup> Andrea Wootten;<sup>j</sup> Garry McDowell<sup>c</sup>

## **Affiliations:**

a: Emergency Department, Central Manchester University Hospitals NHS Foundation Trust, Oxford Road, Manchester, M13 9WL, United Kingdom

b: Cardiovascular Sciences Research Group, The University of Manchester, Manchester Academic Health Science Centre, Oxford Road, Manchester, M13 9PL, United Kingdom

c: School of Healthcare Science, Manchester Metropolitan University, Oxford Road, Manchester, United Kingdom

d: Emergency Department, St. George's NHS Foundation Trust,

e: Emergency Department, Royal Devon & Exeter Hospital NHS Foundation Trust

f: Emergency Department, Bolton NHS Foundation Trust

g: Emergency Department, Hampshire Hospitals NHS Foundation Trust

h: Emergency Department, Harrogate and District NHS Foundation Trust

i: Emergency Department, Northumbria Healthcare NHS Foundation Trust

j: Emergency Department, Arrowe Park Hospital, Wirral University Teaching Hospital NHS Foundation Trust

## **Corresponding author and address:**

Prof Richard Body

Professor and Honorary Consultant in Emergency Medicine

Emergency Department, Manchester Royal Infirmary, Oxford Road, Manchester, M13 9WL, United Kingdom

**Email:** [richard.body@manchester.ac.uk](mailto:richard.body@manchester.ac.uk)

1  
2  
3  
4  
5 **Telephone:** 00 44 7880 712 929  
6  
7

8  
9 **Key words:** Acute Coronary Syndromes; Clinical Decision Rules; Cardiac Troponin; Sensitivity and  
10 Specificity  
11  
12

13  
14 **Word count:** 3,580 words; **Abstract word count:** 250 words  
15  
16  
17

18  
19 *Declarations*

20  
21 Richard Body: Speaker fees from Singulex; Roche (consultancy, research grant); Abbott Point of Care  
22 (speaker fee, research grant); FABPulous BV (consultancy); Alere (donation of reagents for research)  
23  
24

25  
26  
27 *Funding sources and sponsorship*

28  
29 This study was funded by a research grant from Abbott Point of Care. The study was sponsored by  
30  
31 Manchester University NHS Foundation Trust.  
32  
33

34  
35  
36  
37 The Corresponding Author has the right to grant on behalf of all authors and does grant on behalf of all  
38 authors, an exclusive licence (or non exclusive for government employees) on a worldwide basis to the  
39  
40 BMJ Publishing Group Ltd and its Licensees to permit this article (if accepted) to be published in HEART  
41  
42 editions and any other BMJ PGL products to exploit all subsidiary rights  
43  
44  
45  
46  
47  
48  
49  
50  
51  
52  
53  
54  
55  
56  
57  
58  
59  
60

## Abstract

### Objectives

The rapid turnaround time of point of care (POC) cardiac troponin (cTn) assays is highly attractive for crowded Emergency Departments (EDs). We evaluated the diagnostic accuracy of the Troponin-only Manchester Acute Coronary Syndromes (T-MACS) decision aid with a POC cTn assay.

### Methods

In a prospective diagnostic accuracy study at 8 EDs, we included patients with suspected acute coronary syndromes (ACS). Blood drawn on arrival and 3 hours later was analysed for POC cTnI (i-Stat, Abbott Point of Care). The primary outcome was a diagnosis of ACS, which included both an adjudicated diagnosis of acute myocardial infarction (AMI) based on serial laboratory cTn testing and major adverse cardiac events (death, AMI or coronary revascularisation) within 30 days.

### Results

Of 716 patients included, 105 (14.7%) had ACS. Using serial POC cTnI concentrations over 3 hours could have 'ruled out' ACS in 198 (31.2%) patients with a sensitivity of 99.0% (95% CI 94.4 – 100.0%) and negative predictive value 99.5% (95% CI 96.5 – 99.9%). No AMIs were missed. T-MACS 'ruled in' ACS for 65 (10.4%) patients with a positive predictive value of 91.2% (95% CI 82.1 – 95.9%) and specificity 98.9% (97.6 – 99.6%).

### Conclusion

With a POC cTnI assay, T-MACS could 'rule out' ACS for approximately one third of patients within 3 hours while 'ruling in' ACS for another 10%. The rapid turnaround time and portability of the POC assay

1  
2  
3  
4  
5 make this an attractive pathway for use in crowded EDs or urgent care centres. Future work should also  
6  
7 evaluate use in the pre-hospital environment.  
8  
9

## 10 **Background**

11  
12  
13  
14 Chest pain is the second most common reason for emergency hospital admission [1]. However, as the  
15  
16 prevalence of acute coronary syndromes (ACS) in those who are admitted on suspicion of that diagnosis  
17  
18 is less than 20% [2,3], many hospital admissions could be avoided with improved diagnostic technology.  
19  
20 It may now be possible to 'rule out' ACS following a single blood test in the Emergency Department (ED)  
21  
22 for some patients. This can be achieved, for example, by using the limit of detection (LoD) of a high  
23  
24 sensitivity cardiac troponin (hs-cTn) assay as a 'rule out' threshold [4,5], the History, electrocardiogram  
25  
26 (ECG), Age, Risk factors and Troponin (HEART) score [6] or the Troponin-only Manchester Acute Coronary  
27  
28 Syndromes (T-MACS) decision aid [2,7].  
29  
30  
31  
32  
33

34 These algorithms, however, currently rely on the use of central laboratory troponin assays, which have a  
35  
36 relatively long turnaround time (TAT). The target TAT is 60 minutes from receipt of the sample in the  
37  
38 laboratory [8] but this does not account for pre-analytical (including time to collect and transport  
39  
40 samples) and post-analytical factors. The use of near-patient cardiac troponin testing could help to  
41  
42 reduce overall TAT. Because contemporary point of care (POC) cardiac troponin assays do not have the  
43  
44 same sensitivity and precision as laboratory assays, diagnostic algorithms must be specifically validated  
45  
46 with these assays before clinical use.  
47  
48  
49  
50  
51

52 The T-MACS decision aid could be used to both 'rule in' and 'rule out' ACS by using an algorithm (derived  
53  
54 by logistic regression) to calculate the probability of ACS using basic data about a patient's symptoms,  
55  
56  
57  
58  
59  
60

1  
2  
3  
4 signs, electrocardiogram and cardiac troponin (cTn) concentrations. To date, T-MACS has only been  
5  
6 validated using high-sensitivity [7] and contemporary [9] central laboratory-based cTn assays. However,  
7  
8 successful validation with a point of care (POC) cTn assay would reduce turnaround time, helping to  
9  
10 unburden crowded EDs. Because contemporary POC cTn assays generally have inferior sensitivity and  
11  
12 precision to central laboratory assays, we recognised that serial sampling may be required in order to  
13  
14 achieve adequate diagnostic accuracy. However, given that the TAT of POC cTn assays is as little as 10-15  
15  
16 minutes, serial sampling over 3 hours could still facilitate rapid decision making. Importantly, this would  
17  
18 enable rapid diagnosis even in situations where central laboratory cTn assays are not immediately  
19  
20 available. We therefore aimed to prospectively validate T-MACS generated with a contemporary POC cTn  
21  
22 assay, using (a) a single admission blood sample; and (b) two samples drawn 3 hours apart.  
23  
24  
25  
26  
27  
28  
29

## 30 **Methods**

### 31 **Design and setting**

32  
33  
34 We undertook a multi-centre, prospective diagnostic test accuracy study at eight EDs in England (see  
35  
36 Supplementary Appendix for details of each site). The study was approved by the National Research  
37  
38 Ethics Service (reference 14/NW/1344), was sponsored by Manchester University NHS Foundation Trust  
39  
40 and was undertaken in full compliance with the Declaration of Helsinki and according to the principles of  
41  
42 Good Clinical Practice. The study was prospectively registered on the National Institute for Health  
43  
44 Research (NIHR) portfolio (reference UK CRN 18000). All participants provided written informed consent.  
45  
46  
47  
48  
49  
50  
51  
52  
53  
54  
55  
56  
57  
58  
59  
60



## Study participants

We included adults (aged >18 years) who presented to the ED with pain, discomfort or pressure in the chest, epigastrium, neck, jaw or upper limb without an apparent non-cardiac source [10], which the treating physician believed warranted investigation for possible ACS. We excluded patients whose peak symptoms had occurred >12 hours prior to presentation at the ED, patients with unequivocal evidence of ST elevation myocardial infarction requiring referral for immediate revascularisation, patients with another medical condition requiring hospital admission and patients who lacked the mental capacity to provide written informed consent. To expedite recruitment and avoid delays to blood sampling and clinical care, the initial blood samples for this study could be drawn at the time of arrival in the ED and at the same time as routine clinical samples without delay, with written consent obtained thereafter. In the event that written consent could not be obtained, samples were discarded and patients were not included in the study. Because of logistical, training and governance requirements, we included a convenience sample dictated by the availability of research nurses or study investigators. Sites were opened in phases with the first site commencing recruitment on 9<sup>th</sup> February 2015 and the final site completing recruitment on 25<sup>th</sup> October 2016.

## Data collection

The treating clinician and study nurse recorded comprehensive clinical data at the time of inclusion using a bespoke case report form, in accordance with contemporary international standards. These data included details of: the presenting complaint; previous medical history; medication history; social history

1  
2  
3  
4 (including alcohol intake and tobacco use); family history of ischaemic heart disease; findings on physical  
5  
6 examination; 12-lead ECG findings (including the presence or absence of dynamic ECG changes such as T  
7  
8 wave inversion or ST segment depression); medications received during the active study phase;  
9  
10 disposition; findings of relevant laboratory tests and medical imaging. The variables required for  
11  
12 calculation of T-MACS were recorded by the treating clinician. 'Worsening' angina' was determined to be  
13  
14 present or absent at the discretion of the clinician, but included patients with known angina or those  
15  
16 with symptoms suspicious for new angina who had symptoms with increasing frequency, intensity or  
17  
18 duration, or with less provocation (e.g. exertion) than usual. The interobserver reliability of all  
19  
20 constituent variables in T-MACS has previously been established, and all variables had a kappa score >0.6  
21  
22 [2]. Interobserver reliability was not re-evaluated in this study.  
23  
24  
25  
26  
27  
28

29 In this observational study, patients were treated according to local guidelines, but in order to be  
30  
31 selected for the study all sites were required to confirm that local practices were consistent with the  
32  
33 guidance issued by the National Institute of Health and Care Excellence [11] and the European Society of  
34  
35 Cardiology [12].  
36  
37  
38  
39  
40  
41  
42

### 43 **Laboratory analyses**

44  
45 Patients underwent venepuncture at the time of arrival in the ED and 3 hours (+/- 30 minutes) later.  
46  
47 Whole blood (collected in lithium heparin vials) was analysed for cardiac troponin using the i-Stat assay  
48  
49 (Abbott Point of Care, New Jersey, 99th percentile 80ng/L, LoD 20ng/L, co-efficient of variation 16.5% at  
50  
51 the 99th percentile), in accordance with the manufacturer's instructions. All staff responsible for  
52  
53 undertaking these analyses received bespoke training to run the i-Stat assays.  
54  
55  
56  
57  
58  
59  
60

1  
2  
3  
4  
5  
6  
7 In addition, patients also underwent central laboratory cTn testing, which formed part of the reference  
8  
9 standard for the diagnosis of AMI. In order to ensure that participants underwent adequate reference  
10  
11 standard investigations for AMI, sites were asked to confirm that their local practice was consistent with  
12  
13 current national and international guidance. Specifically, sites were required to confirm that patients  
14  
15 would undergo the following cTn testing:

- 16  
17  
18 • *If a contemporary (not high sensitivity) troponin assay was used:* Laboratory-based troponin  
19  
20 testing on arrival and either 6 hours after arrival or 10 to 12 hours after the onset of peak  
21  
22 symptoms [11,12]
- 23  
24  
25 • *If a high sensitivity troponin assay was used:* Laboratory-based troponin testing on arrival and  
26  
27 either 3 hours after arrival or 10 to 12 hours after the onset of peak symptoms [11,12]

28  
29 A high sensitivity troponin assay was defined as an assay that can detect troponin concentrations in at  
30  
31 least 50% of apparently healthy individuals with a co-efficient of variation of <10% at the 99th percentile  
32  
33 cut-off [13].  
34  
35  
36  
37  
38

## 39 **Outcomes**

40  
41  
42 The primary outcome was the diagnosis of ACS. ACS was defined as either acute myocardial infarction  
43  
44 (AMI), occurring during the initial hospital admission (prevalent AMI), or incident major adverse cardiac  
45  
46 events (MACE) occurring within 30 days. MACE included death (all cause), incident AMI and coronary  
47  
48 revascularisation. All coronary revascularization procedures were considered to be relevant if they  
49  
50 occurred within 30 days of the initial ED attendance. The diagnosis of AMI was allocated by two  
51  
52 independent investigators, blinded to T-MACS and i-Stat cTnI concentrations. AMI was defined in  
53  
54 accordance with the third universal definition of AMI [14] based on a rise and/or fall of cardiac troponin  
55  
56  
57  
58  
59  
60

1  
2  
3  
4 with at least one troponin concentration above the 99<sup>th</sup> percentile of the assay, in conjunction with at  
5  
6 least one of: symptoms of myocardial ischaemia, ECG changes or imaging evidence of new loss of viable  
7  
8 myocardium. All relevant clinical notes and imaging reports were available for review by the  
9  
10 adjudicators.  
11  
12  
13  
14  
15  
16

### 17 **Follow up**

18  
19 Patients were followed up throughout their inpatient course and by telephone, email, letter or in person  
20  
21 after 30 days. Data on length of stay; cardiac investigations and procedures; and details of any  
22  
23 haemorrhagic complications were collected. If it was not possible to contact participants directly after  
24  
25 repeated attempts, we obtained follow up information from patients' primary care practitioners where  
26  
27 possible.  
28  
29  
30  
31  
32  
33

### 34 **Statistical analysis**

35  
36 For the primary analyses, we evaluated the diagnostic accuracy of T-MACS used with point of care cTnI  
37  
38 testing (i-Stat) at presentation and at 3 hours. For comparison, we also determined the diagnostic  
39  
40 accuracy of the i-Stat cTnI assay when used alone (at presentation and after 3 hours) and in combination  
41  
42 with ECG findings (as interpreted by the treating clinician), and we evaluated the diagnostic accuracy of  
43  
44 T-MACS using the POC cTnI assay to the diagnostic accuracy when the central laboratory assay was used.  
45  
46 For the latter evaluation, we used the cardiac troponin assay used in clinical practice. Four sites (Bolton,  
47  
48 Harrogate, Northumbria and Basingstoke) were excluded from this analysis because the laboratory did  
49  
50 not release cTn results at low concentrations, precluding calculation of T-MACS (which relies on the use  
51  
52  
53  
54  
55  
56  
57  
58  
59  
60

1  
2  
3  
4 of low cTn concentrations to identify 'very low risk' patients). Each of the remaining sites used the hs-  
5  
6 cTnT assay (Roche Diagnostics Elecsys).  
7  
8  
9

10  
11 To evaluate diagnostic accuracy we calculated sensitivity, specificity, positive and negative predictive  
12 values (PPV and NPV), positive and negative likelihood ratios. We summarised the overall diagnostic  
13 accuracy of T-MACS and cTnI (i-Stat) by calculating the area under the receiver operating characteristic  
14 (ROC) curve. For these analyses, we excluded patients who did not have adequate reference standard  
15 investigations for AMI, those who were lost to follow-up at 30 days and those who had missing data for  
16 T-MACS. Statistical analyses were completed in SPSS version 23.0 (SPSS Inc, Chicago, Illinois) and/or  
17 MedCalc version 13.1.2.0 (Mariakerke, Belgium).  
18  
19  
20  
21  
22  
23  
24  
25  
26  
27  
28

29 To evaluate T-MACS, we applied the previously derived formula to estimate the probability of ACS,  
30 entering cTnI concentrations in ng/L [7]. Consistent with our approach in the original model derivation,  
31 patients with cTnI concentrations below the limit of detection of the assay (10ng/L) were considered to  
32 have concentrations of 9ng/L. For this evaluation, we used a minor modification to the original formula  
33 based on feedback from clinicians after implementation of the T-MACS algorithm. Clinicians had noted  
34 that patients with 'worsening (crescendo) angina' could be classified as 'low risk' (suitable for further  
35 evaluation in a low dependency inpatient environment) in the absence of other risk factors. However,  
36 they felt that such patients should be classified as 'moderate risk'. The co-efficient for this variable was  
37 therefore manually re-calibrated to the minimum required to achieve this. Thus, the probability ( $p$ ) of  
38 ACS was calculated as follows:  
39  
40  
41  
42  
43  
44  
45  
46  
47  
48  
49  
50

$$51 \quad p = 1 / (1 + e^{-(4.65 + 1.828a + 1.54b + 0.849c + 1.783d + 1.878e + 1.412f + 0.084g)})$$

52  
53 Where  $a$  denotes acute ECG ischaemia;  $b$  denotes a pattern of worsening (or crescendo) angina;  $c$  is pain  
54 radiation to the right arm or right shoulder;  $d$  is pain associated with vomiting;  $e$  is visible diaphoresis in  
55  
56  
57  
58  
59  
60

1  
2  
3  
4 the ED;  $f$  is hypotension (defined as systolic blood pressure  $<100\text{mmHg}$ ); and  $g$  is cTn concentration. For  
5  
6 all variables except  $g$ , a value of '1' is entered if the feature is present and a value of '0' is entered if it is  
7  
8 absent.  
9

10  
11  
12  
13 The T-MACS model classifies patients into four distinct risk groups based on their calculated risk  
14  
15 probability according to the cut offs applied in the derivation of the original MACS rule. The four risk  
16  
17 groups with associated suggestion for patient disposition include: (1) very low risk ( $p < 0.02$ ; patients  
18  
19 eligible for immediate discharge); (2) low risk ( $0.02 \leq p < 0.05$ ; suitable for serial cardiac troponin sampling  
20  
21 in an ED observation ward or comparable alternative); (3) moderate risk ( $0.05 \leq p < 0.95$ ; serial cardiac  
22  
23 troponin sampling required in general ward such as an Acute Medical Ward); and (4) high risk ( $p \geq 0.95$ ;  
24  
25 ACS considered ruled in, best managed in a high dependency unit or specialist ward).  
26  
27  
28  
29  
30  
31

### 32 *Sample size*

33  
34  
35 Assuming that the prevalence of the primary outcome was approximately 10%, and that the algorithm  
36  
37 would achieve 100% sensitivity, the lower bound of the 95% CI would be  $>90\%$  for sensitivity and  $>99\%$   
38  
39 for negative predictive value with a sample size of 605 participants. Accounting for potential loss to  
40  
41 follow up and missing data (estimated to be approximately 5%), we planned to include a total of  
42  
43 approximately 650 participants. Recruitment was continued until we had verified data collection from all  
44  
45 sites to ensure that this minimum sample size had been exceeded.  
46  
47  
48  
49  
50  
51  
52  
53  
54  
55  
56  
57  
58  
59  
60

## Results

We included a total of 716 patients at 8 centres, of which 105 (14.7%) had ACS, including 89 (12.4%) with prevalent AMI. During the recruitment period at participating centres, a total of 868 patients were recruited, although it was not possible to undertake the POC cTnI test for 126 patients because the analyser or cartridges were unavailable. This left 762 patients eligible for the analysis, of which 716 had full data and were included in the analysis of diagnostic accuracy (Figure 1). The baseline characteristics of participants are summarised in Table 1. A total of 634 patients underwent POC i-Stat testing at 3 hours, of which 97 (15.3%) had ACS including 82 (12.9%) with AMI. Based on a single i-Stat POC cTnI measurement at the time of arrival in the ED, the area under the receiver operating characteristic (ROC) curve (AUC) for T-MACS was 0.86 (95% CI 0.82 – 0.90). Accounting for the 3h POC cTnI concentration increased the AUC to 0.92 (95% CI 0.89 – 0.95).

The proportions of patients with ACS and AMI in each T-MACS risk group (based on i-Stat POC cTnI concentrations) are shown in Tables 2 and 3. Table 2 shows the proportions in each risk group based on a single POC cTnI test taken at the time of arrival in the ED. Table 3 shows the proportions based on two POC cTnI tests taken 3 hours apart. For the latter analysis, the maximum cTnI concentration detected was utilised.

### *T-MACS as a 'rule out' test ('very low risk' vs all other risk groups)*

T-MACS could have been used to 'rule out' 306 (42.7%) patients based on a single test at the time of arrival, or 196 (31.4%) patients following a repeat cTnI test at 3h. Based on the initial POC cTnI concentration, there were six false negative results with T-MACS, including 4 patients with prevalent AMI

1  
2  
3  
4 and two patients who developed MACE within 30 days (both MACEs were percutaneous coronary  
5 intervention, PCI).  
6  
7  
8  
9

10  
11 Of those patients, only one remained 'false negative' once the second POC cTnI concentration measured  
12 at 3 hours had been taken into account. That patient did not have prevalent AMI (high sensitivity cTnT  
13 concentrations 4ng/L and 5ng/L respectively) but underwent invasive coronary angiography and PCI as  
14 an outpatient following discharge from hospital. The test characteristics of T-MACS using POC cTnI on  
15 arrival and at 3 hours are shown in Table 4.  
16  
17  
18  
19  
20  
21  
22  
23  
24

25 For comparison, if patients were 'ruled out' based on a single POC cTnI concentration <10ng/L on arrival  
26 and the absence of acute ECG ischaemia without accounting for T-MACS, a sensitivity of 87.4% (95% CI  
27 79.4 – 93.1%) and NPV of 97.0% (95% CI 95.0 – 98.2%) could have been achieved, and ACS would have  
28 been immediately 'ruled out' in 426 (60.4%) patients. Similarly, accounting for the 3h cTnI concentration  
29 with this strategy would have achieved a sensitivity of 93.7% (95% CI 86.8% - 97.7%) and an NPV of  
30 98.3% (95% CI 96.3– 99.2%), 'ruling out' 348 (55.8%) patients.  
31  
32  
33  
34  
35  
36  
37  
38  
39  
40

#### 41 *T-MACS as a 'rule in' test ('high risk' vs all other risk groups)*

42  
43  
44 T-MACS could have 'ruled in' ACS in 49 (6.8%) patients using the initial cTnI concentration with a PPV of  
45 89.8% (95% CI 78.1 – 95.6%) and specificity 99.2% (95% CI 98.1 – 99.7%). In comparison, measuring POC  
46 cTnI concentration on arrival alone, with the 99<sup>th</sup> percentile cut-off (80ng/L), could have 'ruled in' ACS for  
47 42 (6.0%) patients. This would have achieved a PPV of 90.5% (95% 77.6 – 96.3%) with a specificity of  
48 99.3% (95% CI 98.3 – 99.8%).  
49  
50  
51  
52  
53  
54  
55  
56  
57  
58  
59  
60



1  
2  
3  
4  
5 Also accounting for POC cTnI concentrations measured at 3 hours, T-MACS could have 'ruled in' ACS for  
6  
7 68 (10.7%) patients. This achieved a PPV of 91.2% (95% CI 82.1 – 95.9%) and a specificity of 98.9% (95%  
8  
9 CI 97.6 – 99.6%). Using POC cTnI concentrations alone with the 99<sup>th</sup> percentile cut-off (80ng/L,  
10  
11 considering the maximum concentration measured at presentation and 3 hours and without T-MACS)  
12  
13 would have 'ruled in' ACS for a similar proportion of patients (10.4%) with similar test characteristics  
14  
15 (PPV 92.3% and specificity 99.1%).  
16  
17  
18  
19  
20

#### 21 *Diagnostic accuracy of T-MACS a central laboratory assay*

22  
23  
24 A total of 565 patients were included in this analysis, of which 65 (11.5%) had AMI and 78 (13.8%) had  
25  
26 ACS. T-MACS identified 267 (47.2%) patients as 'very low risk' with the central laboratory (hs-cTnT) assay.  
27  
28 Of those, two patients with AMI were wrongly identified as being 'very low risk' using the central  
29  
30 laboratory assay and three had ACS. This gave a sensitivity of 98.9% (95% CI 96.8 – 99.8%) and an NPV of  
31  
32 98.6% (95% CI 95.6 – 99.6%) for ACS. For 'ruling in' ACS by identifying 30 (5.3%) patients as 'high risk', T-  
33  
34 MACS had a specificity of 99.4% (95% CI 98.2 - 99.9%) and PPV 90.0% (95% CI 73.7 – 96.7%).  
35  
36  
37

#### 38 *Diagnostic accuracy of the POC cTn assay alone*

39  
40  
41 Without T-MACS, the POC cTn assay alone (tested at 0 & 3h using the 99<sup>th</sup> percentile cut-off) had a  
42  
43 sensitivity of 63.9% (95% CI 53.5 – 73.4%), specificity 99.2% (95% CI 98.2 – 99.8%), PPV 92.5% (83.6–  
44  
45 96.8%) and NPV 94.8% (93.3 – 95.9%). If only patients with no ECG ischaemia were 'ruled out', test  
46  
47 characteristics were as follows: sensitivity 73.2% (95% CI 63.2 – 81.7%), specificity 93.1% (90.6 – 95.1%),  
48  
49 PPV 65.7% (57.9 – 72.8%) and NPV 95.1% (93.3 – 96.4%).  
50  
51  
52  
53  
54  
55  
56  
57  
58  
59  
60

## Discussion

In this work we have achieved two important goals with significant implications for practice. Our findings have identified wider clinical applications for (a) the POC cTnI i-Stat assay; and (b) the T-MACS decision aid. By using the i-Stat cTnI assay alongside T-MACS, ACS could be 'ruled out' with serial sampling over 3 hours. Until now, guidelines have stated that the 3-hour rule out pathway should be reserved for use with high sensitivity cTn assays [11,12,15]. Our work suggests that the same can be achieved with a contemporary, POC assay, when used alongside the T-MACS decision aid.

In addition to 'ruling out' ACS, the algorithm could also enable the diagnosis to be 'ruled in' with over 90% positive predictive value, thus facilitating early access to specialist care for patients who will benefit the most. This compares very favourably to existing rapid 'rule in' algorithms. For example, using troponin criteria alone the PPV of a single test has been reported to be less than 90%, even at very high cut-offs [16]. Even with serial sampling over 1 hour, the 1-hour rule-in and rule-out algorithm achieves a PPV of less than 80% [17]. These are not direct comparisons, and our work therefore does not suggest that the T-MACS is superior to these alternatives. However this other work does emphasise the value of achieving a PPV >90%, as reported here.

Until now, the T-MACS decision aid had only been validated for use with high sensitivity cardiac troponin T (Roche) [7,18] and contemporary (cardiac troponin I, Siemens cTnI-Ultra) [9] laboratory-based assays. Validation of the model with a POC cTnI assay enhances the possibilities for future clinical application. These possibilities include (a) expedited diagnostic evaluation in the ED, helping to reduce crowding; (b) enabling the use of biomarker testing in ambulatory care environments without a central laboratory on-site (for example, urgent care centres); and (c) diagnostic evaluation in the pre-hospital environment,

1  
2  
3  
4 including in the ambulance. The latter will require another prospective clinical study to establish the  
5 feasibility of using POC cTnI assays alongside the T-MACS decision aid in the pre-hospital environment.  
6  
7 Because the algorithm is likely to be used sooner after symptom onset, it will also be important to verify  
8 its diagnostic accuracy in that environment. The Pre-hospital Evaluation of Sensitive Troponin (PRESTO)  
9 study, led by members of our group, will shortly address that objective.  
10  
11  
12  
13  
14

15  
16  
17  
18 Importantly, to obtain the benefits offered by POC testing, use of the accompanying T-MACS algorithm  
19 (which takes account of additional clinical information) is required to achieve sufficient diagnostic  
20 accuracy. Using POC cTnI concentrations alone, even with an unconventional 'rule out' cut-off at the  
21 extreme of the reportable range of the assay, could not 'rule out' ACS. These findings are entirely  
22 consistent with previous work which has shown that POC cTn assays used alone have suboptimal  
23 sensitivity [19,20].  
24  
25  
26  
27  
28  
29  
30  
31

32  
33  
34 Our findings are also consistent with previous research evaluating other rapid rule out strategies using  
35 point of care biomarker assays in the Emergency Department. In the Randomised Assessment of  
36 Treatment using Panel Assay of Cardiac markers (RATPAC) study, who were randomised to receive point  
37 of care biomarker (cTn, myoglobin and creatine kinase MB [CK-MB] fraction) testing over 90 minutes  
38 were more likely to be successfully discharged from the ED within 4 hours of arrival than patients who  
39 received central laboratory testing [21]. However, the strategy was not found to be cost-effective  
40 (possibly caused by over-triage relating to the use of non-specific biomarkers) [22] and the diagnostic  
41 accuracy of the point of care biomarkers (including cTn measured using the Siemens Stratus CS assay)  
42 was found to be inferior to central laboratory assays when used alone [23]. In Australasia, serial testing  
43 for cTn, myoglobin and CK-MB over 2 hours was found to rule out ACS with high sensitivity when used  
44 alongside the Thrombolysis in Myocardial Infarction (TIMI) risk score [24]. However, the strategy only  
45  
46  
47  
48  
49  
50  
51  
52  
53  
54  
55  
56  
57  
58  
59  
60

1  
2  
3  
4 identified 9.8% patients as eligible for early discharge, whereas using a central laboratory cTn assay  
5  
6 maintained sensitivity while identifying 20% of patients as eligible for early discharge [3]. This current  
7  
8 work adds to the literature by identifying that point of care cTn testing used alongside the T-MACS  
9  
10 decision aid could identify over 30% patients as eligible for early discharge, while also 'ruling in' the  
11  
12 diagnosis in other patients with high specificity.  
13  
14  
15  
16  
17  
18

### 19 **Limitations**

20  
21 Although this is a multi-centre study at eight EDs and our total sample size of 716 patients exceeded the  
22  
23 calculated requirement, our 95% CIs were sufficiently wide to incorporate values that, if true, are  
24  
25 unlikely to be clinically acceptable. Therefore, further prospective confirmation of our findings is  
26  
27 desirable. We should also note that 126 patients did not undergo POC cTnI testing during the study  
28  
29 period, due to a lack of available analysers or cTnI cartridges. A smaller number of patients had  
30  
31 insufficient data recorded to calculate T-MACS or to verify the final diagnosis. It seems unlikely that this  
32  
33 would substantially affect the results of our study as there is no suggestion that the missing data would  
34  
35 introduce a systematic source of bias. Finally, we should acknowledge that while sites were encouraged  
36  
37 to recruit a consecutive sample of patients, recruitment was ultimately dictated by researcher  
38  
39 (predominantly research nurse) availability, meaning that this is ultimately a convenience sample.  
40  
41  
42  
43  
44  
45

46 One key advantage of POC cTn assays is that the turnaround time is faster than central laboratory assays.  
47  
48 In this work, it was not possible to quantify the time saving as our objective was to evaluate diagnostic  
49  
50 accuracy. Thus, the POC tests were predominantly undertaken by research nurses who also had other  
51  
52 non-clinical tasks to complete (such as seeking consent). Future work evaluating the implementation of  
53  
54  
55  
56  
57  
58  
59  
60

1  
2  
3  
4  
5 POC cTn tests in practice should therefore seek to quantify the potential time saving when POC cTn  
6  
7 assays are used.  
8  
9

10  
11 The point of care troponin assays were also run by clinical research nurses and clinicians who had been  
12  
13 received all appropriate study training and had been delegated responsibility to undertake the assays by  
14  
15 the local Principal Investigator at each site. While this was required for governance reasons, and while  
16  
17 the staff running the analyses have a similar background to all other clinical staff working in the ED, it will  
18  
19 be important for future research to evaluate the assay when used as part of routine clinical practice.  
20  
21  
22  
23  
24  
25

## 26 **Conclusion**

27  
28  
29 The T-MACS decision aid could be used to 'rule in' and 'rule out' ACS with the POC cTnI i-Stat assay with  
30  
31 serial samples drawn 3 hours apart. This would enable expedited diagnostic evaluation in EDs and may  
32  
33 facilitate future use of both T-MACS and POC cTnI testing in ambulatory care and pre-hospital  
34  
35 environments.  
36  
37  
38  
39  
40  
41  
42  
43  
44  
45  
46  
47  
48  
49  
50  
51  
52  
53  
54  
55  
56  
57  
58  
59  
60

## References

- 1 Hospital Episode Statistics. Hospital admitted patient care activity, 2016-17: diagnosis. 2017. <https://digital.nhs.uk/data-and-information/publications/statistical/hospital-admitted-patient-care-activity/2016-17> (accessed 19 Jun2018).
- 2 Body R, Carley S, McDowell G, Pemberton P, Burrows G, Cook G, *et al.* The Manchester Acute Coronary Syndromes (MACS) decision rule for suspected cardiac chest pain: derivation and external validation. *Heart* 2014;**100**:1462–8.
- 3 Than M, Cullen L, Aldous S, Parsonage WA, Reid CM, Greenslade J, *et al.* 2-Hour Accelerated Diagnostic Protocol to Assess Patients With Chest Pain Symptoms Using Contemporary Troponins as the Only Biomarker. *Journal of the American College of Cardiology* 2012;**59**:2091–8.
- 4 Pickering JW, Than MP, Cullen L, Aldous S, Ter Avest E, Body R, *et al.* Rapid Rule-out of Acute Myocardial Infarction With a Single High-Sensitivity Cardiac Troponin T Measurement Below the Limit of Detection: A Collaborative Meta-analysis. *Ann Intern Med* 2017;**166**:715–24.
- 5 Carlton E, Greenslade J, Cullen L, Body R, Than M, Pickering JW, *et al.* Evaluation of High-Sensitivity Cardiac Troponin I Levels in Patients With Suspected Acute Coronary Syndrome. *JAMA Cardiology* 2016;**1**:405.
- 6 Van Den Berg P, Body R. The HEART score for early rule out of acute coronary syndromes in the emergency department: a systematic review and meta-analysis. *Eur Heart J Acute Cardiovasc Care* 2018;**7**:111–9.

- 1  
2  
3  
4  
5 7 Body R, Carlton E, Sperrin M, Lewis PS, Burrows G, Carley S, *et al.* Troponin-only Manchester Acute  
6  
7 Coronary Syndromes (T-MACS) decision aid: single biomarker re-derivation and external validation in  
8  
9 three cohorts. *Emergency Medicine Journal* 2017;**34**:349–56.  
10  
11  
12 8 Wu AHB, Christenson RH, Greene DN, Jaffe AS, Kavsak PA, Ordonez-Llanos J, *et al.* Clinical Laboratory  
13  
14 Practice Recommendations for the Use of Cardiac Troponin in Acute Coronary Syndrome: Expert  
15  
16 Opinion from the Academy of the American Association for Clinical Chemistry and the Task Force on  
17  
18 Clinical Applications of Cardiac Bio-Markers of the International Federation of Clinical Chemistry and  
19  
20 Laboratory Medicine. *Clinical Chemistry* 2018;**64**:645–55.  
21  
22  
23  
24 9 Van Den Berg P, Burrows G, Lewis P, Carley S, Body R. Validation of the (Troponin-only) Manchester  
25  
26 Acute Coronary Syndromes decision aid with a contemporary cardiac troponin I assay. *Am J Emerg*  
27  
28 *Med* 2018;**36**:602–7.  
29  
30  
31  
32 10 Amsterdam EA, Wenger NK, Brindis RG, Casey DE, Ganiats TG, Holmes DR, *et al.* 2014 AHA/ACC  
33  
34 guideline for the management of patients with non-ST-elevation acute coronary syndromes:  
35  
36 executive summary: a report of the American College of Cardiology/American Heart Association Task  
37  
38 Force on Practice Guidelines. *Circulation* 2014;**130**:2354–94.  
39  
40  
41  
42 11 National Clinical Guideline Centre for Acute and Chronic Conditions. Chest pain of recent onset: NICE  
43  
44 Clinical Guideline CG95. 2010.<https://www.nice.org.uk/guidance/cg95> (accessed 20 Jun2018).  
45  
46  
47  
48 12 Roffi M, Patrono C, Collet J-P, Mueller C, Valgimigli M, Andreotti F, *et al.* 2015 ESC guidelines for the  
49  
50 management of acute coronary syndromes in patients presenting without persistent ST-segment  
51  
52 elevation. *Eur Heart J* 2016;**37**(3):267–315.  
53  
54  
55  
56  
57  
58  
59  
60

- 1  
2  
3  
4  
5 13 Apple FS, Collinson PO, for the IFCC Task Force on Clinical Applications of Cardiac Biomarkers.  
6  
7 Analytical Characteristics of High-Sensitivity Cardiac Troponin Assays. *Clinical Chemistry* 2011;**58**:54–  
8  
9 61.  
10  
11  
12 14 Thygesen K, Alpert JS, Jaffe AS, Simoons ML, Chaitman BR, White HD, *et al.* Third universal definition  
13  
14 of myocardial infarction. *Eur Heart J* 2012;**33**:2551–67.  
15  
16  
17 15 NICE Diagnostics Guidance DG15. Myocardial infarction (acute): Early rule out using high-sensitivity  
18  
19 troponin tests (Elecsys Troponin T high-sensitive, ARCHITECT STAT High Sensitive Troponin-I and  
20  
21 AccuTnl+3 assays). 2014.<https://www.nice.org.uk/guidance/dg15> (accessed 13 Feb2015).  
22  
23  
24  
25 16 Mueller-Hennessen M, Mueller C, Giannitsis E, Biener M, Vafaie M, deFilippi CR, *et al.* Serial  
26  
27 Sampling of High-Sensitivity Cardiac Troponin T May Not Be Required for Prediction of Acute  
28  
29 Myocardial Infarction Diagnosis in Chest Pain Patients with Highly Abnormal Concentrations at  
30  
31 Presentation. *Clin Chem* 2017;**63**:542–51.  
32  
33  
34  
35 17 Mueller C, Giannitsis E, Christ M, Ordóñez-Llanos J, deFilippi C, McCord J, *et al.* Multicenter  
36  
37 Evaluation of a 0-Hour/1-Hour Algorithm in the Diagnosis of Myocardial Infarction With High-  
38  
39 Sensitivity Cardiac Troponin T. *Annals of Emergency Medicine* Published Online First: January 2016.  
40  
41 doi:10.1016/j.annemergmed.2015.11.013  
42  
43  
44  
45 18 Greenslade JH, Nayer R, Parsonage W, Doig S, Young J, Pickering JW, *et al.* Validating the Manchester  
46  
47 Acute Coronary Syndromes (MACS) and Troponin-only Manchester Acute Coronary Syndromes (T-  
48  
49 MACS) rules for the prediction of acute myocardial infarction in patients presenting to the  
50  
51 emergency department with chest pain. *Emergency Medicine Journal* 2017;**34**:517–23.  
52  
53  
54  
55  
56  
57  
58  
59  
60



- 1  
2  
3  
4  
5 19 Palamalai V, Murakami MM, Apple FS. Diagnostic performance of four point of care cardiac troponin  
6  
7 I assays to rule in and rule out acute myocardial infarction. *Clinical Biochemistry* 2013;**46**:1631–5.  
8  
9  
10 20 Bruins Slot MHE, van der Heijden GJMG, Stelpstra SD, Hoes AW, Rutten FH. Point-of-care tests in  
11  
12 suspected acute myocardial infarction: A systematic review. *International Journal of Cardiology*  
13  
14 2013;**168**:5355–62.  
15  
16  
17 21 Goodacre SW, Bradburn M, Cross E, Collinson P, Gray A, Hall AS, *et al*. The Randomised Assessment  
18  
19 of Treatment using Panel Assay of Cardiac Markers (RATPAC) trial: a randomised controlled trial of  
20  
21 point-of-care cardiac markers in the emergency department. *Heart* 2011;**97**:190–6.  
22  
23  
24  
25 22 Fitzgerald P, Goodacre SW, Cross E, Dixon S. Cost-effectiveness of point-of-care biomarker  
26  
27 assessment for suspected myocardial infarction: the randomized assessment of treatment using  
28  
29 panel assay of cardiac markers (RATPAC) trial. *Acad Emerg Med* 2011;**18**:488–95.  
30  
31  
32  
33 23 Collinson P, Gaze D, Goodacre S. Comparison of contemporary troponin assays with the novel  
34  
35 biomarkers, heart fatty acid binding protein and copeptin, for the early confirmation or exclusion of  
36  
37 myocardial infarction in patients presenting to the emergency department with chest pain. *Heart*  
38  
39 2014;**100**:140–5.  
40  
41  
42  
43 24 Than, M, Cullen, L, Reid, CM, Swee, HL, Aldous, S, Ardagh, MW, *et al*. A 2-h diagnostic protocol to  
44  
45 assess patients with chest pain symptoms in the Asia-Pacific region (ASPECT): a prospective  
46  
47 observational validation study. *The Lancet* 2011;**377**:1077–84.  
48  
49  
50  
51  
52  
53  
54  
55  
56  
57  
58  
59  
60

1  
2  
3  
4  
5 **Legends to figures**  
6  
7  
8  
9

10 **Figure 1: Flow chart of study participants**  
11  
12  
13  
14  
15  
16  
17  
18  
19  
20  
21  
22  
23  
24  
25  
26  
27  
28  
29  
30  
31  
32  
33  
34  
35  
36  
37  
38  
39  
40  
41  
42  
43  
44  
45  
46  
47  
48  
49  
50  
51  
52  
53  
54  
55  
56  
57  
58  
59  
60

Confidential: For Review Only

## Tables

**Table 1: Baseline characteristics of included patients**

	<b>Total (n=716)</b>	<b>ACS present (n=105)</b>	<b>ACS absent (n=611)</b>
Age in years, mean (SD)	57.6 (15.6)	66.1 (14.6)	56.2 (15.3)
Men (%)	445 (62.2)	78 (74.3)	367 (60.1)
Previous myocardial infarction (%)	169 (23.6)	35 (33.3)	134 (21.9)
Previous percutaneous coronary intervention (%)	138 (19.3)	25 (23.8)	113 (18.5)
Previous coronary artery bypass graft (%)	51 (7.1)	12 (11.4)	39 (6.4)
Hypertension (%)	332 (46.4)	59 (56.2)	273 (44.7)
Hyperlipidaemia (%)	256 (35.8)	48 (45.7)	208 (34.0)
Type 1 diabetes mellitus (%)	14 (2.0)	4 (3.8)	10 (1.6)
Type 2 diabetes mellitus (%)	123 (17.2)	31 (29.5)	92 (15.1)
Current smoking (%)	139 (19.4)	28 (26.7)	111 (18.2)
Time from symptom onset to arrival in the ED:			
0 – 3h	354 (49.4)	54 (51.4)	300 (49.1)
3 – 6h	153 (21.4)	25 (23.8)	128 (20.9)
6 – 9h	88 (12.3)	14 (13.3)	74 (12.1)
>9h	73 (10.2)	9 (8.6)	64 (10.5)

<b>Components of the (T-)MACS rule</b>			
Acute ECG ischaemia (%)	64 (8.9)	29 (27.6)	35 (5.7)
Worsening angina (%)	124 (17.3)	33 (31.4)	91 (14.9)
Pain associated with vomiting (%)	38 (5.3)	6 (5.7)	32 (5.2)
Sweating observed (%)	39 (5.4)	7 (6.7)	32 (5.2)
Systolic blood pressure <100mmHg (%)	23 (3.2)	3 (2.9)	20 (3.3)
Pain radiating to right arm or shoulder (%)	63 (8.8)	15 (14.3)	48 (7.9)
POC cTnl (i-Stat) ≥10 ng/L (%)	263 (36.7)	90 (85.7)	173 (28.3)

**Table 2: Proportion of patients with ACS and AMI in the four risk groups for the T-MACS model (test on arrival only)**

	Very low risk	Low risk	Moderate risk	High risk
Total number of patients (%)	306 (42.7)	134 (18.7)	227 (31.7)	49 (6.8)
Number (%) with ACS	6 (2.0)	16 (11.9)	39 (17.2)	44 (89.8)
Number (%) with AMI	4 (1.3)	16 (12.3)	26 (11.6)	43 (87.8)

**Table 3: Proportion of patients with ACS and AMI in the four risk groups for the T-MACS model (test on arrival and at 3 hours)**

	Very low risk	Low risk	Moderate risk	High risk
Total number of patients (%)	198 (31.2)	159 (25.1)	209 (33.0)	68 (10.7)
Number (%) with ACS	1 (0.5)	7 (4.4)	27 (12.9)	62 (91.2)
Number (%) with AMI	0 (0.0)	6 (3.8)	15 (7.2)	61 (89.7)

**Table 4: Diagnostic performance of the MACS and T-MACS models as ‘rule out’ strategies (i.e. ‘very low risk’ versus all other risk groups; 95% confidence intervals in parentheses)**

	T-MACS, 0h only		T-MACS, 0h + 3h	
	For ACS	For AMI	For ACS	For AMI
<b>Sensitivity</b>	94.3 (88.0 – 97.9)	95.5 (88.9 – 98.8)	99.0 (94.4 – 100.0)	100.0 (95.6 – 100.0)
<b>Specificity</b>	49.1 (45.1 – 53.1)	48.2 (44.2 – 52.2)	36.7 (32.6 – 40.9)	35.9 (31.9 – 40.0)
<b>PPV</b>	24.2 (22.5 – 25.9)	20.7 (19.3 – 22.2)	22.0 (20.9 – 23.2)	18.8 (17.9 – 19.8)
<b>NPV</b>	98.0 (95.8 – 99.1)	98.7 (96.7 – 99.5)	99.5 (96.5 – 99.9)	100.0 (NA)
<b>LR+</b>	1.85 (1.69 – 2.03)	1.84 (1.69 – 2.01)	1.57 (1.46 – 1.68)	1.56 (1.47 – 1.66)
<b>LR-</b>	0.12 (0.05 – 0.25)	0.09 (0.04 – 0.24)	0.03 (0.00 – 0.20)	0.00 (NA)

PPV= positive predictive value, NPV= negative predictive value, LR+= positive likelihood ratio, LR-=

negative likelihood ration, ACS= acute coronary syndromes, AMI= acute myocardial infarction

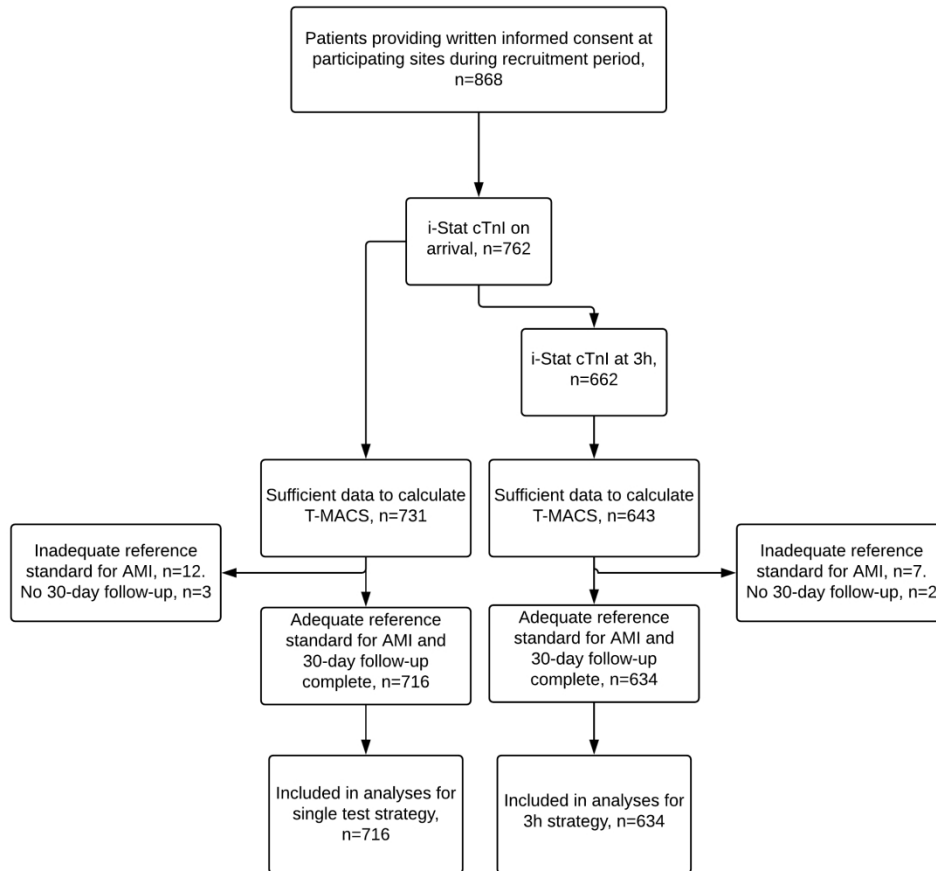


Figure 1: Flow chart of study participants

# Supplementary Appendix

## List of study sites, troponin assays and number of patients recruited per site

Site	Troponin assay	99 <sup>th</sup> percentile	10% CV*	Number of patients included in the study
Manchester Royal Infirmary	Roche Elecsys high sensitivity cardiac troponin T	14ng/L	13ng/L	319
Arrowe Park Hospital	Roche Elecsys high sensitivity cardiac troponin T	14ng/L	13ng/L	17
St George's Hospital, London	Roche Elecsys high sensitivity cardiac troponin T	14ng/L	13ng/L	185
Royal Bolton Hospital	Siemens cardiac troponin I Ultra	40ng/L	30ng/L	43
Royal Devon and Exeter Hospital	Roche Elecsys high sensitivity cardiac troponin T	14ng/L	13ng/L	51
Harrogate District Hospital	Roche Elecsys high sensitivity cardiac troponin T	14ng/L	13ng/L	37
Northumbria Specialist Emergency Care Hospital	Roche Elecsys high sensitivity cardiac troponin T	14ng/L	13ng/L	20
Basingstoke and North Hampshire Hospital	Siemens Centaur cardiac troponin I Ultra	40ng/L	30ng/L	44

CV: co-efficient of variation



Section & Topic	No	Item	Reported on page #
<b>TITLE OR ABSTRACT</b>			
	1	Identification as a study of diagnostic accuracy using at least one measure of accuracy (such as sensitivity, specificity, predictive values, or AUC)	Title (1), abstract (3), methods (3)
<b>ABSTRACT</b>			
	2	Structured summary of study design, methods, results, and conclusions (for specific guidance, see STARD for Abstracts)	3
<b>INTRODUCTION</b>			
	3	Scientific and clinical background, including the intended use and clinical role of the index test	4
	4	Study objectives and hypotheses	4
<b>METHODS</b>			
<i>Study design</i>	5	Whether data collection was planned before the index test and reference standard were performed (prospective study) or after (retrospective study)	5
<i>Participants</i>	6	Eligibility criteria	5
	7	On what basis potentially eligible participants were identified (such as symptoms, results from previous tests, inclusion in registry)	5
	8	Where and when potentially eligible participants were identified (setting, location and dates)	4-5
	9	Whether participants formed a consecutive, random or convenience series	5
<i>Test methods</i>	10a	Index test, in sufficient detail to allow replication	6
	10b	Reference standard, in sufficient detail to allow replication	6
	11	Rationale for choosing the reference standard (if alternatives exist)	6-7
	12a	Definition of and rationale for test positivity cut-offs or result categories of the index test, distinguishing pre-specified from exploratory	6, 7, 8
	12b	Definition of and rationale for test positivity cut-offs or result categories of the reference standard, distinguishing pre-specified from exploratory	7
	13a	Whether clinical information and reference standard results were available to the performers/readers of the index test	6-7
	13b	Whether clinical information and index test results were available to the assessors of the reference standard	7
<i>Analysis</i>	14	Methods for estimating or comparing measures of diagnostic accuracy	8
	15	How indeterminate index test or reference standard results were handled	8
	16	How missing data on the index test and reference standard were handled	8
	17	Any analyses of variability in diagnostic accuracy, distinguishing pre-specified from exploratory	8
	18	Intended sample size and how it was determined	9
<b>RESULTS</b>			
<i>Participants</i>	19	Flow of participants, using a diagram	Figure 1
	20	Baseline demographic and clinical characteristics of participants	10, Table 1
	21a	Distribution of severity of disease in those with the target condition	10-11
	21b	Distribution of alternative diagnoses in those without the target condition	10-11
	22	Time interval and any clinical interventions between index test and reference standard	Table 1
<i>Test results</i>	23	Cross tabulation of the index test results (or their distribution) by the results of the reference standard	Tables 2-3
	24	Estimates of diagnostic accuracy and their precision (such as 95% confidence intervals)	Table 4
	25	Any adverse events from performing the index test or the reference standard	N/A
<b>DISCUSSION</b>			
	26	Study limitations, including sources of potential bias, statistical uncertainty, and generalisability	13
	27	Implications for practice, including the intended use and clinical role of the index test	12 – 14
<b>OTHER INFORMATION</b>			
	28	Registration number and name of registry	5
	29	Where the full study protocol can be accessed	1
	30	Sources of funding and other support; role of funders	2

# STARD 2015

---

## AIM

STARD stands for “Standards for Reporting Diagnostic accuracy studies”. This list of items was developed to contribute to the completeness and transparency of reporting of diagnostic accuracy studies. Authors can use the list to write informative study reports. Editors and peer-reviewers can use it to evaluate whether the information has been included in manuscripts submitted for publication.

---

## EXPLANATION

A **diagnostic accuracy study** evaluates the ability of one or more medical tests to correctly classify study participants as having a **target condition**. This can be a disease, a disease stage, response or benefit from therapy, or an event or condition in the future. A medical test can be an imaging procedure, a laboratory test, elements from history and physical examination, a combination of these, or any other method for collecting information about the current health status of a patient.

The test whose accuracy is evaluated is called **index test**. A study can evaluate the accuracy of one or more index tests. Evaluating the ability of a medical test to correctly classify patients is typically done by comparing the distribution of the index test results with those of the **reference standard**. The reference standard is the best available method for establishing the presence or absence of the target condition. An accuracy study can rely on one or more reference standards.

If test results are categorized as either positive or negative, the cross tabulation of the index test results against those of the reference standard can be used to estimate the **sensitivity** of the index test (the proportion of participants *with* the target condition who have a positive index test), and its **specificity** (the proportion *without* the target condition who have a negative index test). From this cross tabulation (sometimes referred to as the contingency or “2x2” table), several other accuracy statistics can be estimated, such as the positive and negative **predictive values** of the test. Confidence intervals around estimates of accuracy can then be calculated to quantify the statistical **precision** of the measurements.

If the index test results can take more than two values, categorization of test results as positive or negative requires a **test positivity cut-off**. When multiple such cut-offs can be defined, authors can report a receiver operating characteristic (ROC) curve which graphically represents the combination of sensitivity and specificity for each possible test positivity cut-off. The **area under the ROC curve** informs in a single numerical value about the overall diagnostic accuracy of the index test.

The **intended use** of a medical test can be diagnosis, screening, staging, monitoring, surveillance, prediction or prognosis. The **clinical role** of a test explains its position relative to existing tests in the clinical pathway. A replacement test, for example, replaces an existing test. A triage test is used before an existing test; an add-on test is used after an existing test.

Besides diagnostic accuracy, several other outcomes and statistics may be relevant in the evaluation of medical tests. Medical tests can also be used to classify patients for purposes other than diagnosis, such as staging or prognosis. The STARD list was not explicitly developed for these other outcomes, statistics, and study types, although most STARD items would still apply.

---

## DEVELOPMENT

This STARD list was released in 2015. The 30 items were identified by an international expert group of methodologists, researchers, and editors. The guiding principle in the development of STARD was to select items that, when reported, would help readers to judge the potential for bias in the study, to appraise the applicability of the study findings and the validity of conclusions and recommendations. The list represents an update of the first version, which was published in 2003.

More information can be found on <http://www.equator-network.org/reporting-guidelines/stard>.

